



- 额定电流最高达 30A  
Rated currents up to 30A
- 卓越的差模和共模衰减性能  
Excellent attenuation filtering performance
  - 端子排式连接方  
Terminal Block Connections
- 可选导轨安装方式  
DIN-rail installation Filter
- 安规认证: Approval

### 特点 Features

- 高性能单相滤波器，使用更安全可靠的端子排连接方式  
High performance single phase filter with Barrier terminal block connection for safety and reliability
- 双级滤波即电路图为 Fig 2 的产品性能更佳。  
Better performance for double stage of fig.2 filter.
- 良好的共模和差模干扰抑制特性。  
Good performance of common mode and differential mode interference suppression
- 导轨式的安装方式，方便在电气柜内使用  
DIN-rail filter version are ideal for panel build and electric cabinets

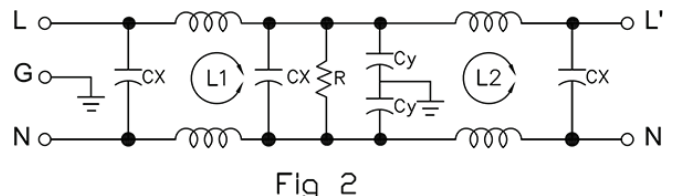
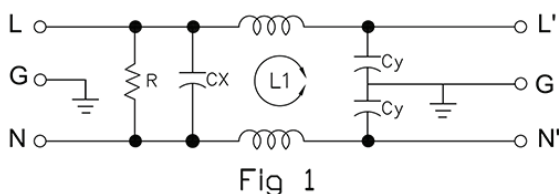
### 应用 Application

- 用于大多数数字设备（尤其是开关电源）可用来抑制连续或间隙性脉冲干扰  
For digital systems(particularly for switching power supplies) to suppress the continuity or intermittent pulse interference
- 带变频器的白色家电、控制系统上的变频器用  
White goods with frequency inverters, inverter based control system

### 技术参数 Technical Data

额定电压 Rated Voltage	125/250VAC
工作频率 Operation Frequency	50/60Hz
额定电流 Rated Current	3-30A
耐压测试 Hi-pot Test	1450VDC 2sec (线对线 Line to Line) 2250VDC 2sec (线对地 Line to Ground)
气候类别 Climate Category	25/85/21 (-25°C to +85°C)
设计参考标准 Design corresponding to	UL 1283, CSA 22.2 No. 8 1986, IEC/EN 60939

### 电路原理图 Electrical Schematic



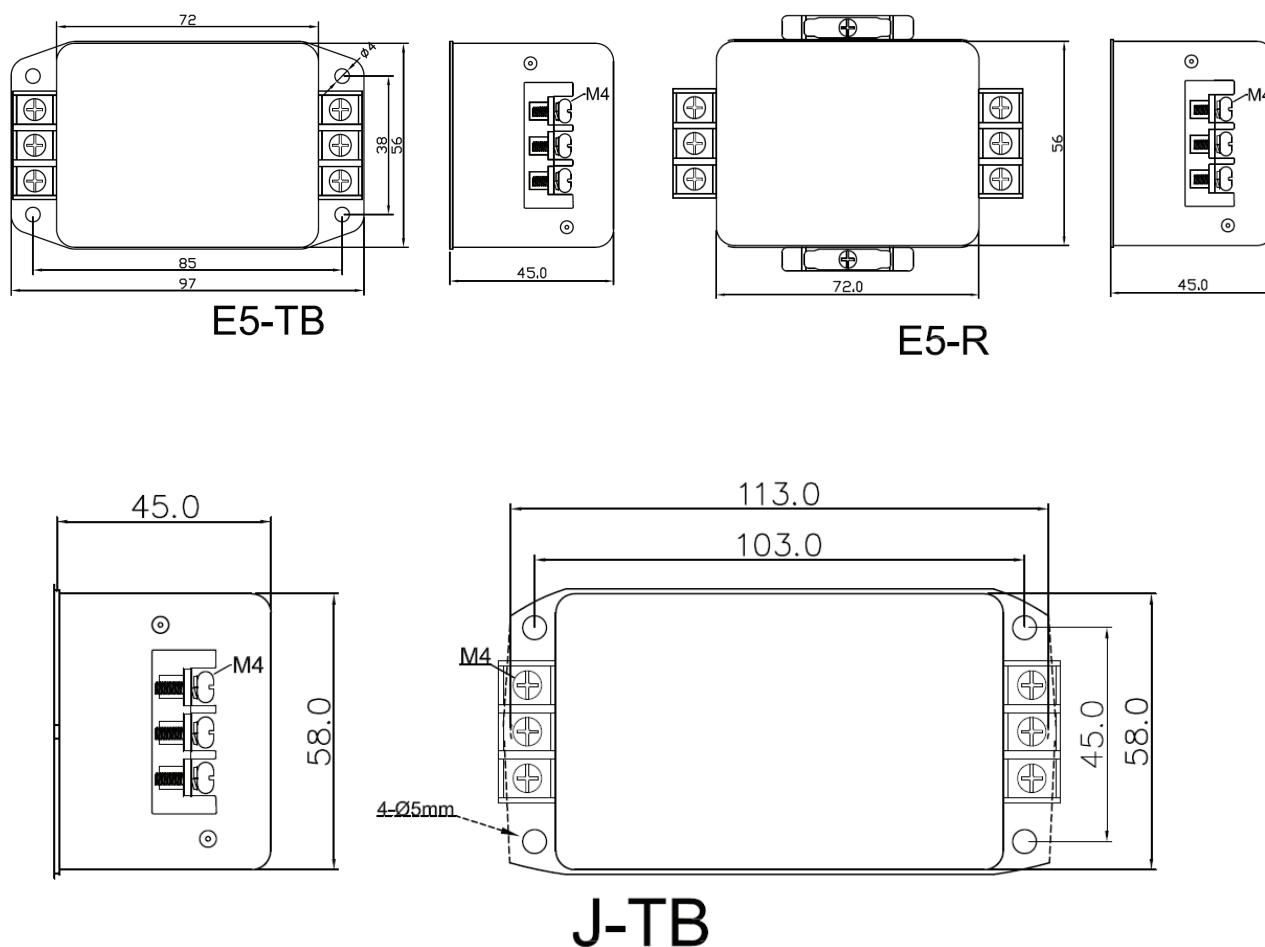
**选型表 Type Selection Table**

型号 Model	额定电流(A) Rated Current	泄漏电流(≤mA) Leakage Current	电路图 Circuit Diagram	外形尺寸 Dim. Fig.	安装方式 Installation Type	
					面板 Panel	导轨 Din Rail
DF200-3A-01T	3	0.5	Fig 1		E5-R	E5-R
DF200-6A-01T	6	0.5	Fig 1		E5-TB	E5-R
DF200-10A-01T	10	0.5	Fig 1		E5-TB	E5-R
DF200-20A-01T	20	0.5	Fig 1		E5-TB	E5-R
DF200-30A-01T	30	1.0	Fig 1		E5-TB	E5-R
DF202-3A-01T	3	0.5	Fig 2		E5-TB	E5-R
DF202-6A-01T	6	0.5	Fig 2		E5-TB	E5-R
DF202-10A-01T	10	0.5	Fig 2		E5-TB	E5-R
DF202-20A-01T	20	0.5	Fig 2		E5-TB	E5-R
DF202-30A-01T	30	1.0	Fig 2		J-TB/E5-TB	E5-R

**Remark: Model name DF202-\*\*A-01 followed by letter "T" refer to panel installation type, "R" refer to DIN-rail installation type**

**型号说明: 型号 DF202-\*\*A-01 后加字母 T 表示面板安装, 型号后加字母 R 表示导轨式安装方式**

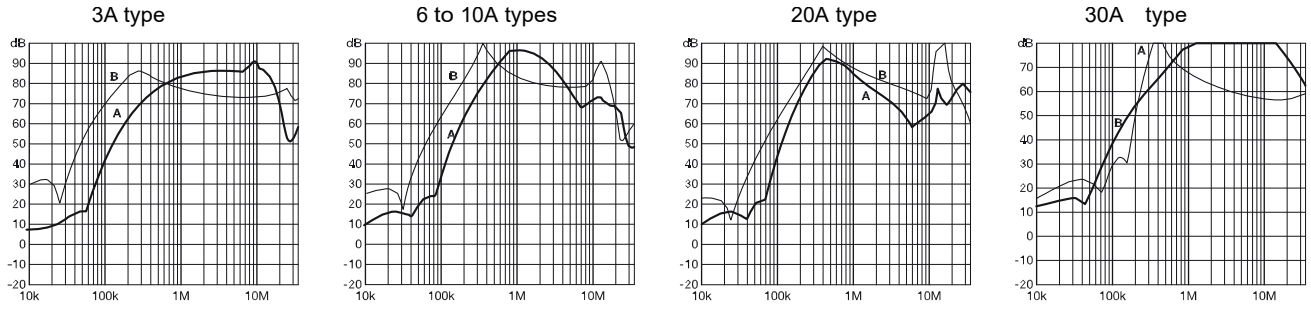
**外形尺寸 Outline Dimensions(mm)**



### 插入损耗 Insertion Loss in dB(DF202 Type)

(50Ω/50Ω 环境下插入损耗 Insertion Loss in dB measured in a 50Ω/50Ω system, as IEC/CISPR No. 17 )

A=Differential mode (差模) B=Common Mode(共模)



备注：以上规格为公司标准产品，可根据客户产品定制设计产品性能和尺寸外观。

Remark: Customized products are available according to special performance or dimensions requirements

更多产品请登陆官方网站：<http://www.dephir.com>

For more products please go to official website: <http://www.dephir.com>